

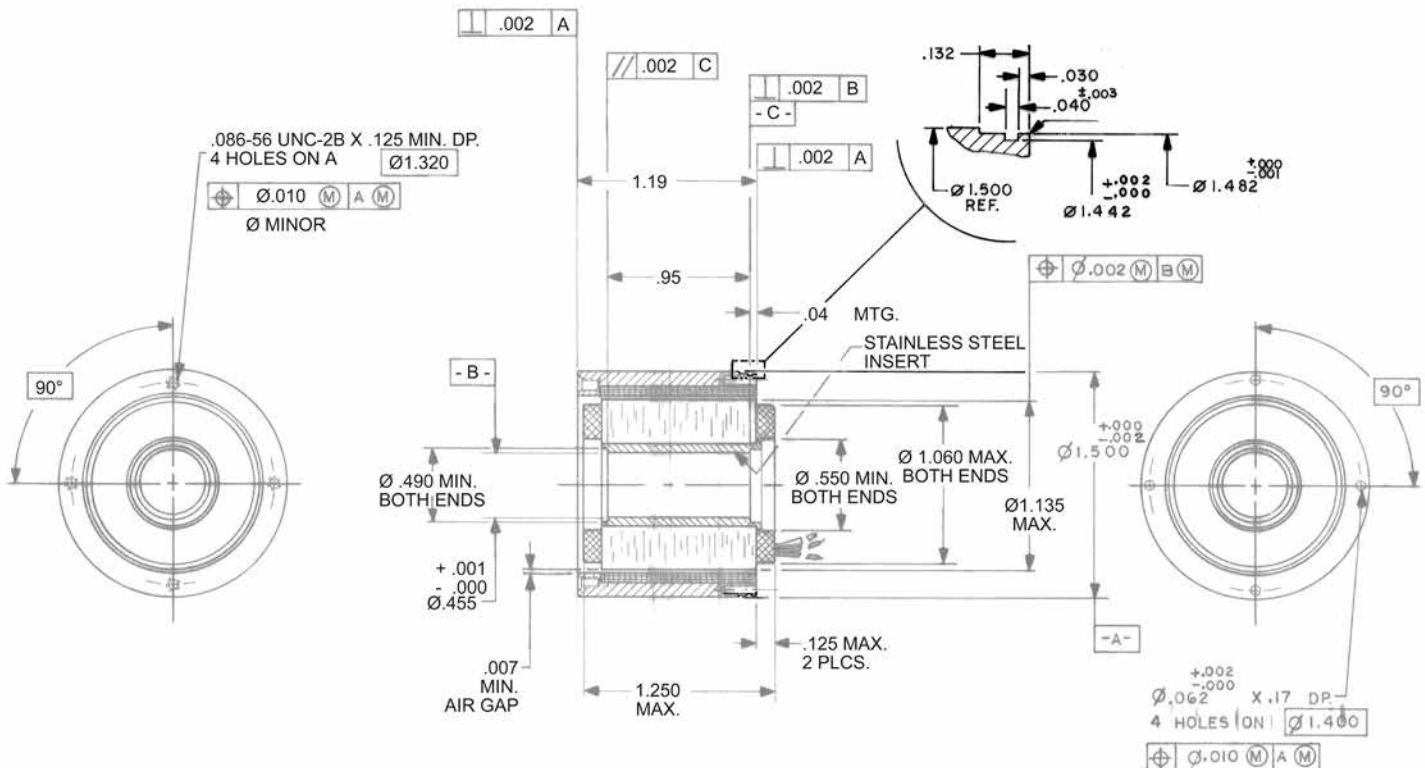
DB-1500-G-4 Specifications

DB-1500-G-4 SPECIFICATIONS @ 25°C

Size Constants	Value	Units
Peak Torque, T_P	53	oz-in
Motor Constant, K_M	6.27	oz-in/ \sqrt{W}
Number of Poles	8	
Number of Phases	3"Y"	
Weight	7	oz (nom)
Motor Inertia, J_M	4.53E-03	oz-in-s ²
Friction Torque, T_F	1	oz-in
Electrical Time Constant, τ_E	0.47	ms
Mechanical Time Constant, τ_M	16.31	ms
Temperature Rise, Housed TPR'	9.8	°C/W
Integral Feedback Device	None	
Winding Constants	Value	Units
Torque Sensitivity, K_T	11.9	oz-in/amp
Back EMF, K_E	0.084	V per rad/s
Terminal Resistance, R_M	3.6	ohms (nom)
Terminal Inductance, L_M	1.7	mH (nom)
Voltage, Stalled at Peak Torque, V_P	16.1	volts
Amps at Peak Torque, I_P	4.46	amps

Direct Drive
Brushless Motors

DB-1500-G-4 Typical Outline Drawing



Note: Inverted brushless motor design; rotor on the outside diameter (OD).

Dimensions are in inches