

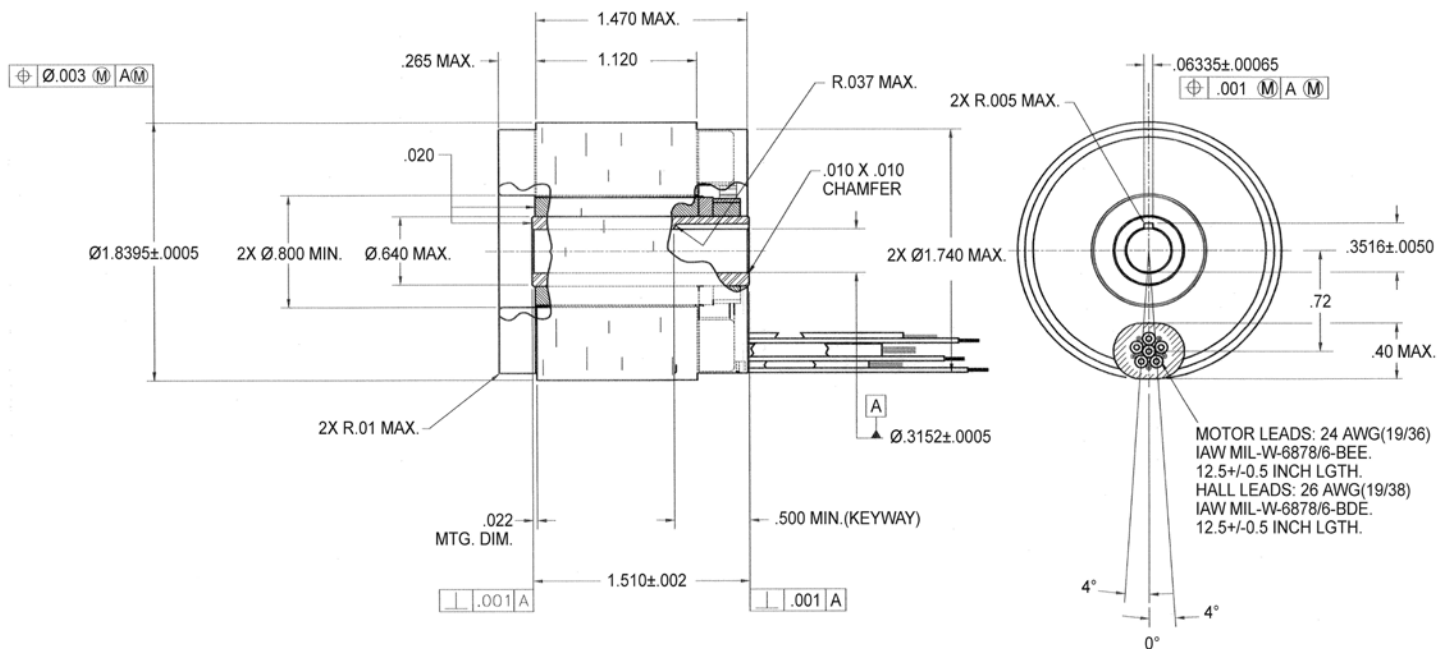
# DB-1840-K-1ES Specifications

## DB-1840-K-1ES SPECIFICATIONS @ 25°C

Size Constants	Value	Units
Peak Torque, $T_P$	243.9	oz-in
Motor Constant, $K_M$	11.85	oz-in/ $\sqrt{W}$
Number of Poles	6	
Number of Phases	3"Y"	
Weight	14	oz (nom)
Motor Inertia, $J_M$	4.80E-04	oz-in-s <sup>2</sup>
Friction Torque, $T_F$	1.8	oz-in
Electrical Time Constant, $\tau_E$	0.884	ms
Mechanical Time Constant, $\tau_M$	0.48	ms
Temperature Rise, Housed TPR'	2	°C/W
Integral Feedback Device	Halls	
Winding Constants	Value	Units
Torque Sensitivity, $K_T$	7.77	oz-in/amp
Back EMF, $K_E$	0.055	V per rad/s
Terminal Resistance, $R_M$	0.43	ohms (nom)
Terminal Inductance, $L_M$	0.38	mH (nom)
Voltage, Stalled at Peak Torque, $V_P$	13.5	volts
Amps at Peak Torque, $I_P$	31.4	amps

Direct Drive  
Brushless Motors

### DB-1840-K-1ES Typical Outline Drawing



Dimensions are in inches