

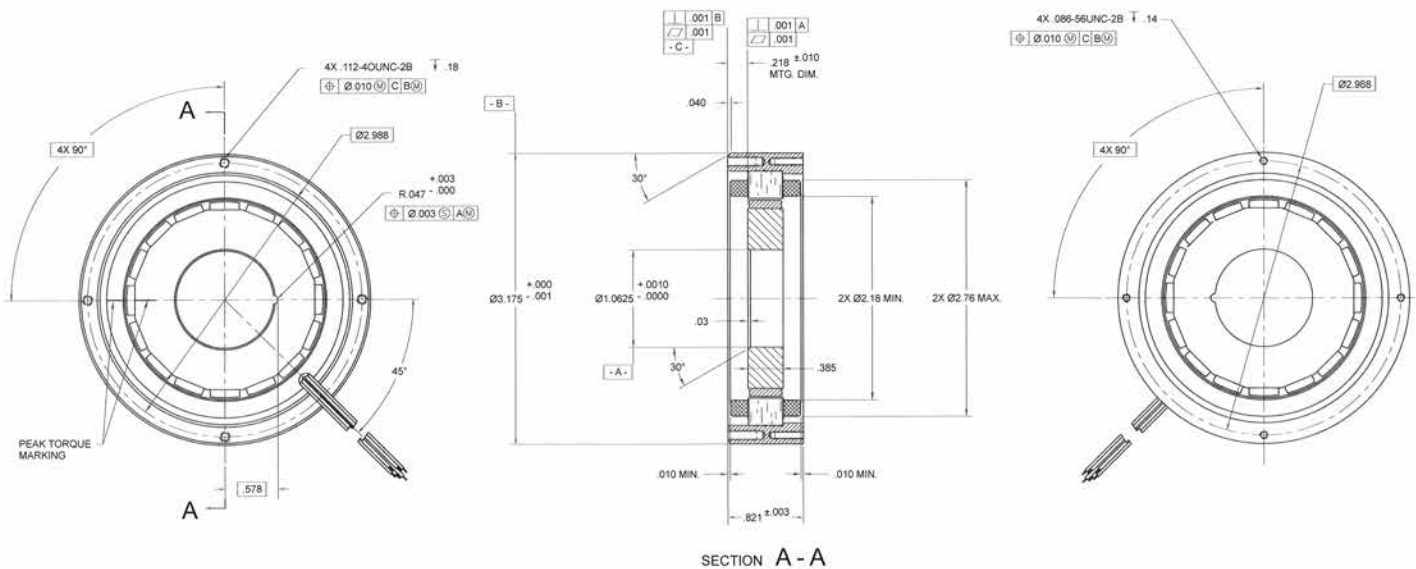
DB-3175-A-1ES Specifications

DB-3175-A-1ES SPECIFICATIONS @ 25°C

Size Constants	Value	Units
Peak Torque, T_P	54	oz-in
Motor Constant, K_M	7.38	oz-in/ \sqrt{W}
Number of Poles	16	
Number of Phases	2"Y"	
Weight	12	oz (nom)
Motor Inertia, J_M	8.30E-03	oz-in-s ²
Friction Torque, T_F	1.5	oz-in
Electrical Time Constant, τ_E	0.15	ms
Mechanical Time Constant, τ_M	21.60	ms
Temperature Rise, Housed TPR'	7.7	°C/W
Sensors	No	
Winding Constants	Value	Units
Torque Sensitivity, K_T	68.0	oz-in/amp
Back EMF, K_E	0.480	V per rad/s
Terminal Resistance, R_M	85.0	ohms (nom)
Terminal Inductance, L_M	13	mH (nom)
Voltage, Stalled at Peak Torque, V_P	68.0	volts
Amps at Peak Torque, I_P	0.800	amps

Direct Drive
Brushless Motors

DB-3175-A-1ES Typical Outline Drawing



Dimensions are in inches