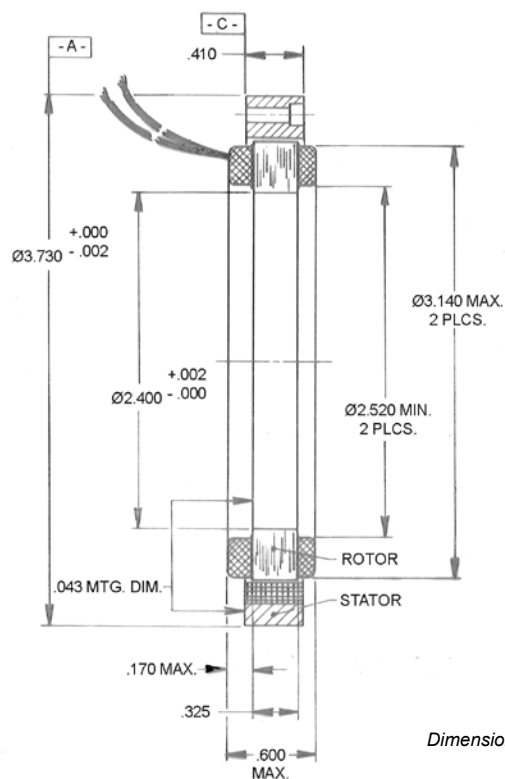
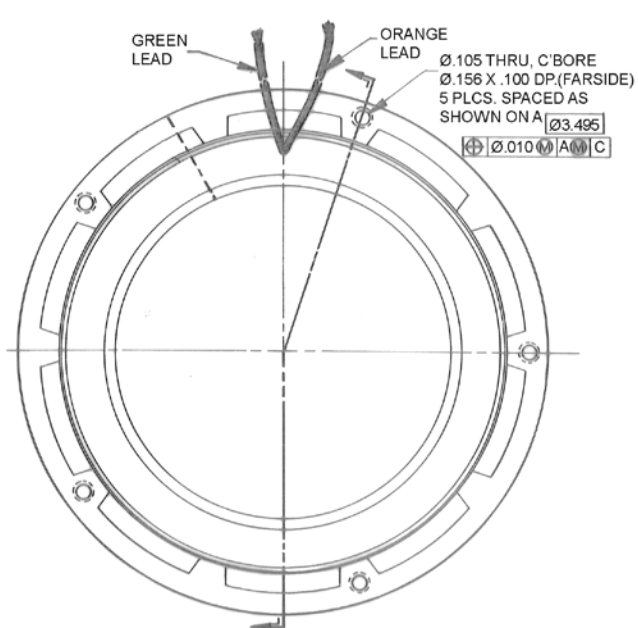


DB-3730-B-1ES Specifications

DB-3730-B-1ES SPECIFICATIONS @ 25°C

Size Constants	Value	Units
Peak Torque, T_P	179	oz-in
Motor Constant, K_M	14.9	oz-in/ \sqrt{W}
Number of Poles	10	
Number of Phases	1	
Weight	11.3	oz (nom)
Motor Inertia, J_M	2.60E-02	oz-in-s ²
Friction Torque, T_F	4.5	oz-in
Electrical Time Constant, τ_E	0.33	ms
Mechanical Time Constant, τ_M	16.67	ms
Temperature Rise, Housed TPR'	5.9	°C/W
Sensors	No	
Winding Constants	Value	Units
Torque Sensitivity, K_T	47.0	oz-in/amp
Back EMF, K_E	0.332	V per rad/s
Terminal Resistance, R_M	10.0	ohms (nom)
Terminal Inductance, L_M	3.3	mH (nom)
Voltage, Stalled at Peak Torque, V_P	38.1	volts
Amps at Peak Torque, I_P	3.81	amps

DB-3730-B-1ES Typical Outline Drawing



Dimensions are in inches