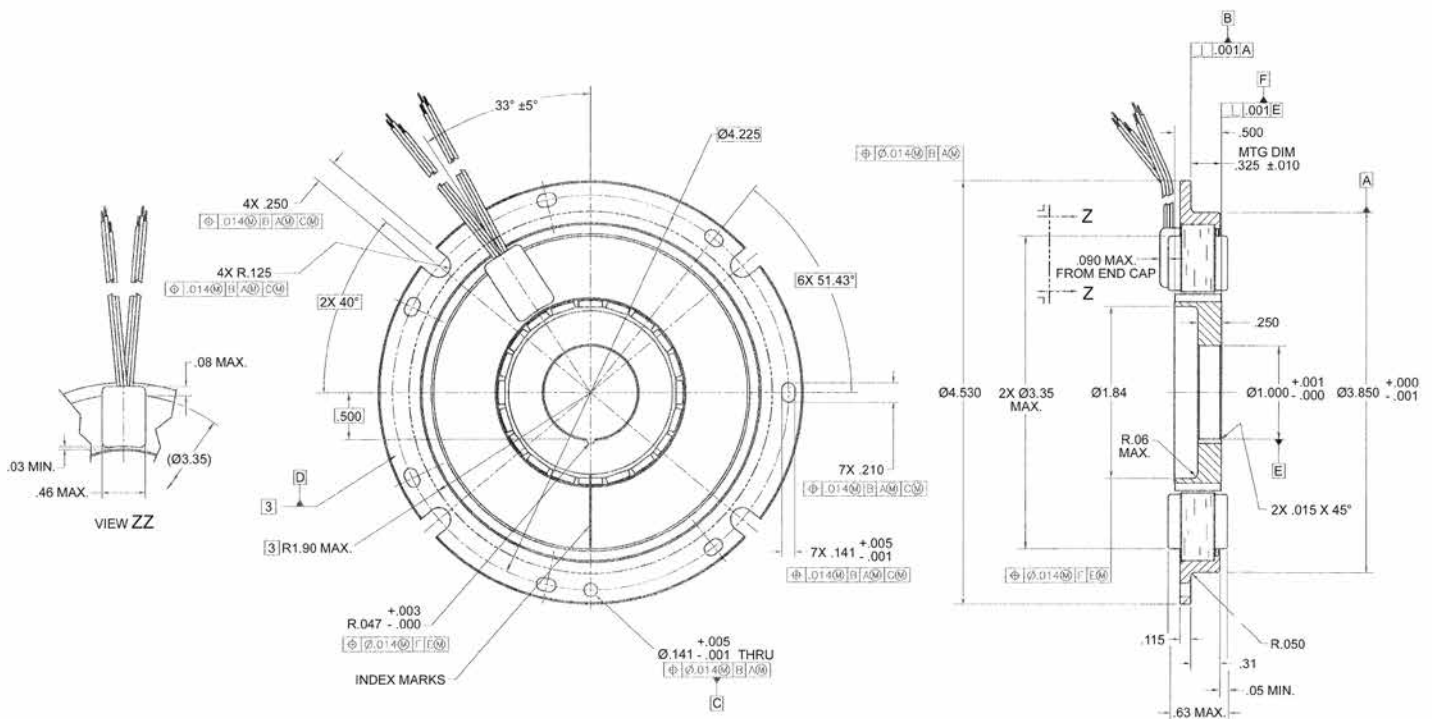


# DB-4530-A-1ES Specifications

## DB-4530-A-1ES SPECIFICATIONS @ 25°C

Size Constants	Value	Units
Peak Torque, $T_P$	192.7	oz-in
Motor Constant, $K_M$	16.14	oz-in/ $\sqrt{W}$
Number of Poles	20	
Number of Phases	2	
Weight	17	oz (nom)
Motor Inertia, $J_M$	7.80E-03	oz-in-s <sup>2</sup>
Friction Torque, $T_F$	2	oz-in
Electrical Time Constant, $\tau_E$	0.450	ms
Mechanical Time Constant, $\tau_M$	4.24	ms
Temperature Rise, Housed TPR'	1.5	°C/W
Integral Feedback Device	None	
Winding Constants	Value	Units
Torque Sensitivity, $K_T$	250	oz-in/amp
Back EMF, $K_E$	1.765	V per rad/s
Terminal Resistance, $R_M$	240	ohms (nom)
Terminal Inductance, $L_M$	108	mH (nom)
Voltage, Stalled at Peak Torque, $V_P$	185	volts
Amps at Peak Torque, $I_P$	0.77	amps

### DB-4530-A-1ES Typical Outline Drawing



Dimensions are in inches