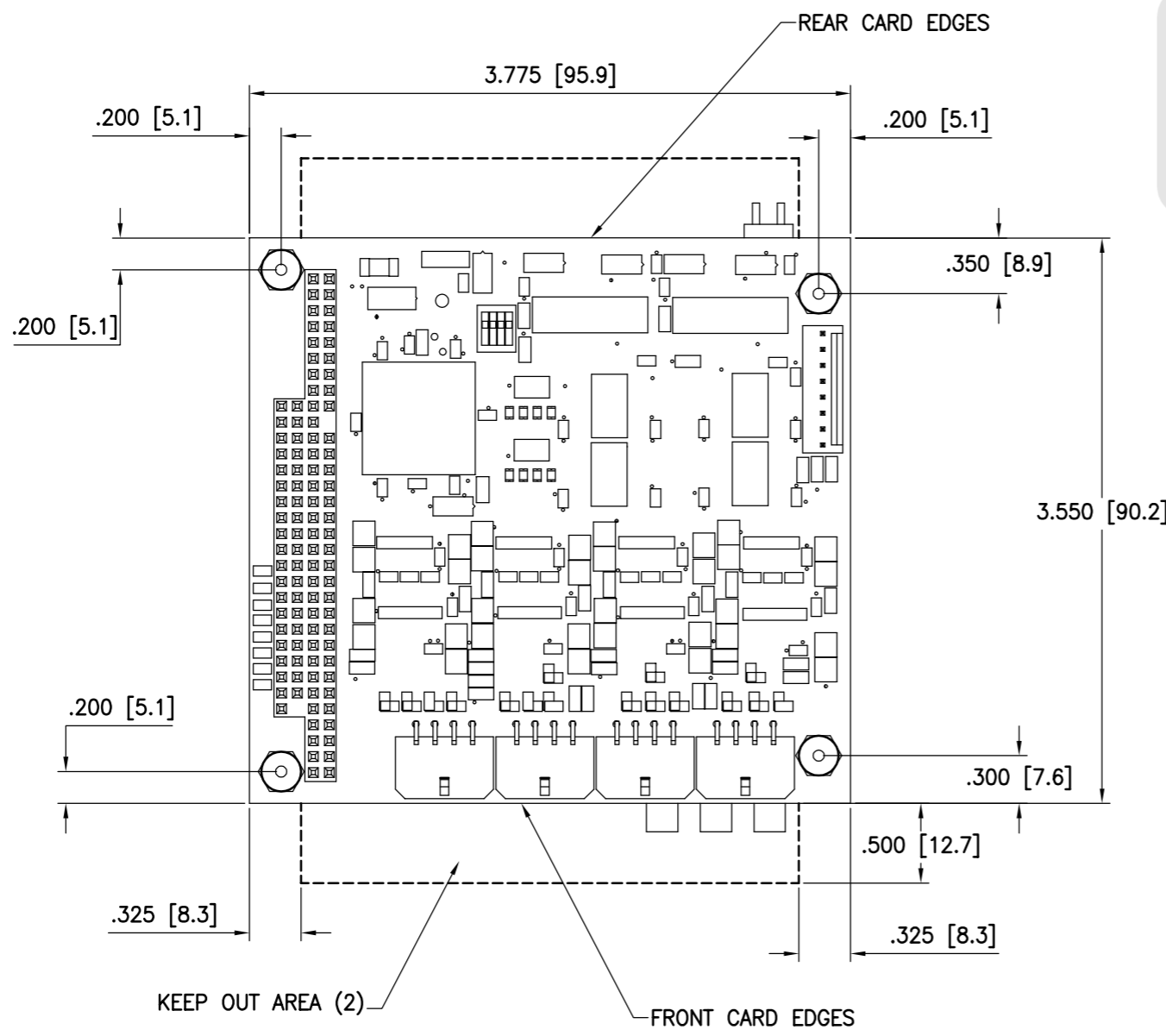
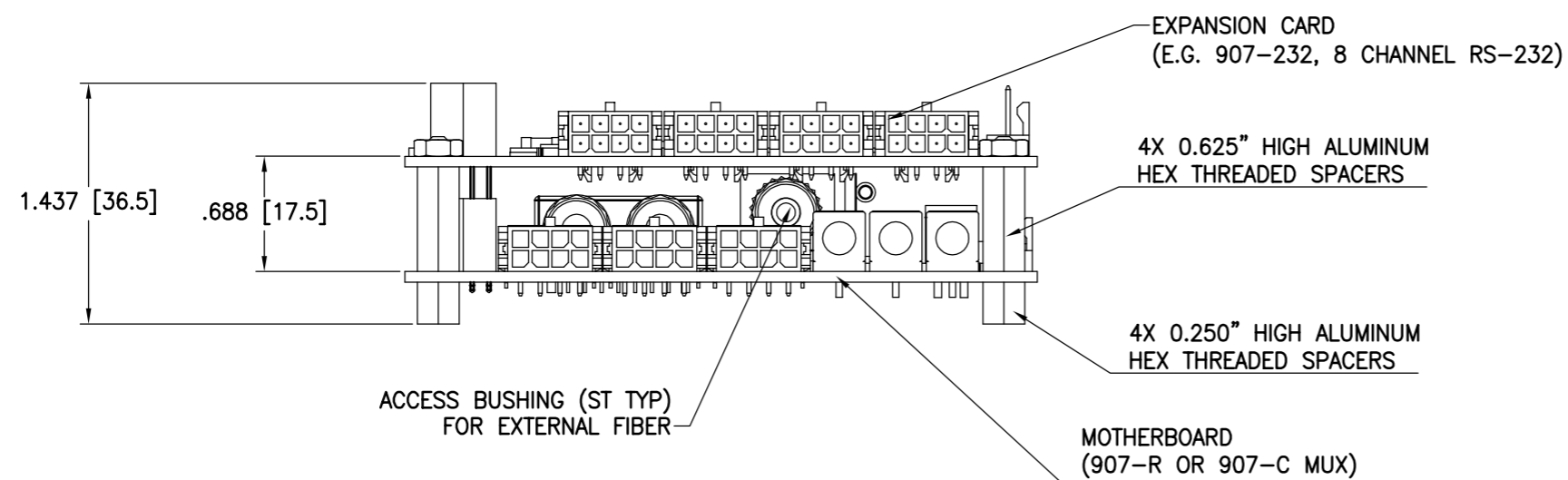


REVISIONS				
ZONE	LTR	DESCRIPTION	DATE	APPROVED
-	A	PRODUCTION ISSUE	2007-02	



NOTES:

1. ALL DIMENSIONS IN INCHES (mm), SCALE 1:1.
2. ALL FIBER IS CORNING SMF-28 OR 50/125 MICRON GRADED INDEX MULTIMODE. FIBER ROUTING NOT SHOWN.
3. UP TO FOUR EXPANSION CARDS MAY BE STACKED ON THE MOTHERBOARD. A TWO-CARD STACK IS SHOWN WITH ONE MOTHERBOARD AND ONE EXPANSION CARD (907-232). EACH ADDITIONAL EXPANSION CARD ADDS 0.688" TO STACK HEIGHT. STACKS INCLUDING MEDIA CONVERTER CARDS OR MORE THAN FOUR EXPANSION CARDS REQUIRE AS-BUILT INSTALLATION DRAWINGS.
4. METAL STANDOFFS ARE ELECTRICALLY ISOLATED.
5. KEEP OUT AREAS ARE FOR MATING CONNECTORS AND FIBER LOOPS. 907-AIB ADAPTER CARD EXTENDS 0.28" INTO THE KEEP OUT AREAS ON BOTH SIDES OF THE STACK. (REF 907-2004-00)
6. FIBER LEADS HAVE 900 MICRON JACKETS: HANDLE WITH CAUTION AND OBSERVE MINIMUM BEND RADIUS AT ALL TIMES. (0.75" RECOMMENDED) AVOID PINCHING OR EXCESSIVE BENDING OF FIBERS WHILE ACCESSING CONNECTORS OR RECONFIGURING CARDS.
7. BOARDS ARE TYPICALLY SHIPPED UNSTACKED TO ALLOW EASIER ACCESS TO THE FIBER BUSHING ON THE MOTHERBOARD.
8. VIDEO AND DATA I/O CONNECTORS ARE ALL LOCATED ON THE FRONT CARD EDGES. POWER CONNECTORS ON MOTHERBOARD AND MEDIA CONVERTERS ARE LOCATED ON THE REAR CARD EDGES. OPTICAL FIBER JUMPERS TO THE MOTHERBOARD TYPICALLY EXIT THE REAR EDGE OF THE STACK.



THIS DOCUMENT IS THE PROPERTY OF FOCAL TECHNOLOGIES CORP. AND MAY BE NEITHER COPIED, REPRODUCED OR OTHERWISE DEALT WITH NOR ITS CONTENTS COMMUNICATED TO OTHERS EXCEPT IN ACCORDANCE WITH WRITTEN INSTRUCTIONS RECEIVED FROM FOCAL TECHNOLOGIES CORP.

FOCAL FOCAL TECHNOLOGIES CORP.		77 FRAZEE AVE DARTMOUTH NS CANADA B3B 1Z4	
MOOG COMPONENTS GROUP, HALIFAX OPERATIONS			
REF NO.	28827	TITLE	GENERIC 907 STACK INSTALLATION
DRAWN	KJ WOOD	DRAWING NO.	907-8900-00
CHECKED		REV.	A
APPROVED		DATE	2007-02-08
SHEET 1 OF 1			