

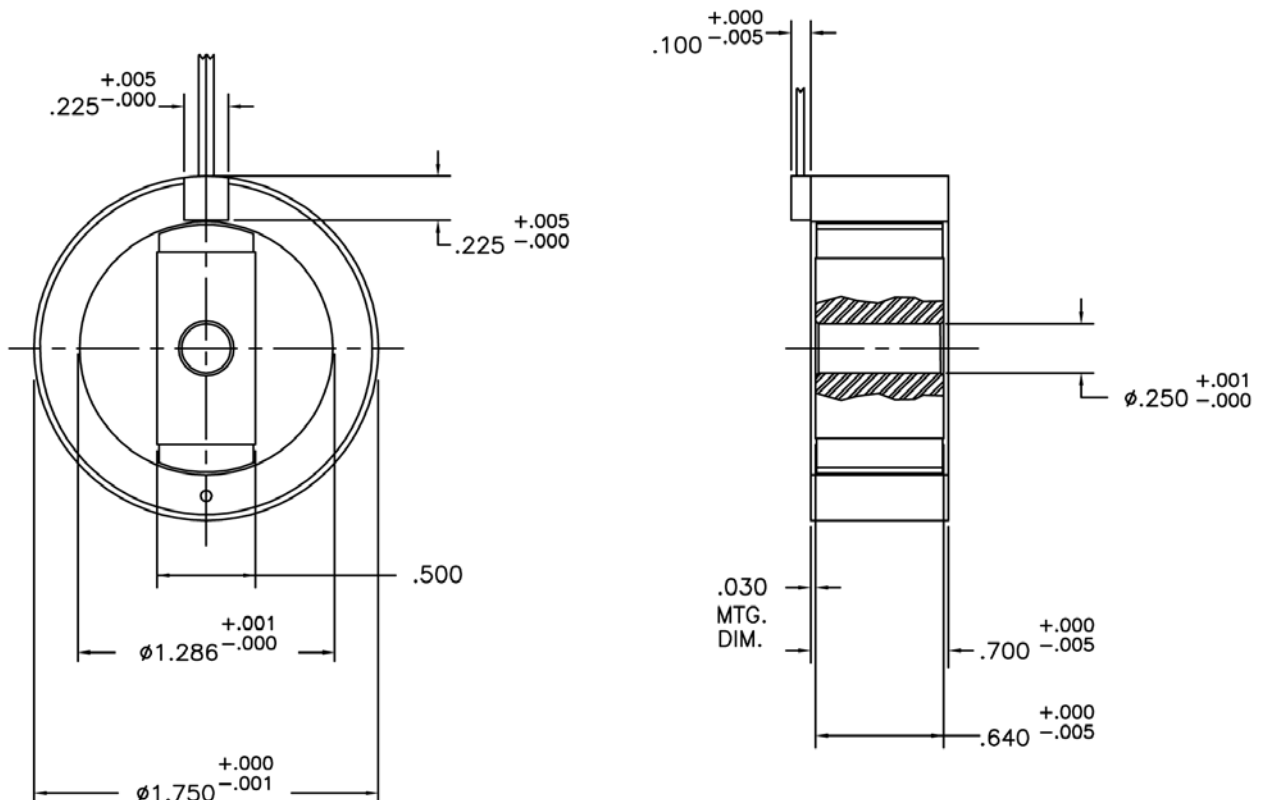
TD-1750-E-1 Specifications

TD-1750-E-1 SPECIFICATIONS @ 25°C

Size Constants	Value	Units
Peak Torque, T_P	7.5	oz-in
Motor Constant, K_M	1.35	oz-in/ \sqrt{W}
Excursion Angle	± 60	degrees
Number of Poles	2	
Weight	5	oz (nom)
Motor Inertia, J_M	1.90E-03	oz-in-s ²
Friction Torque, T_F	0.3	oz-in
Electrical Time Constant, τ_E	0.529	ms
Mechanical Time Constant, τ_M	152	ms
Winding Constants	Value	Units
Torque Sensitivity, K_T	2.5	oz-in/amp
Back EMF, K_E	0.017	V per rad/s
Terminal Resistance, R_M	3.4	ohms (nom)
Terminal Inductance, L_M	1.8	mH (nom)
Voltage, Stalled at Peak Torque, V_P	9	volts
Amps at Peak Torque, I_P	2.5	amps

Direct Drive
Brushless Motors

TD-1750-E-1 Typical Outline Drawing



Dimensions are in inches