

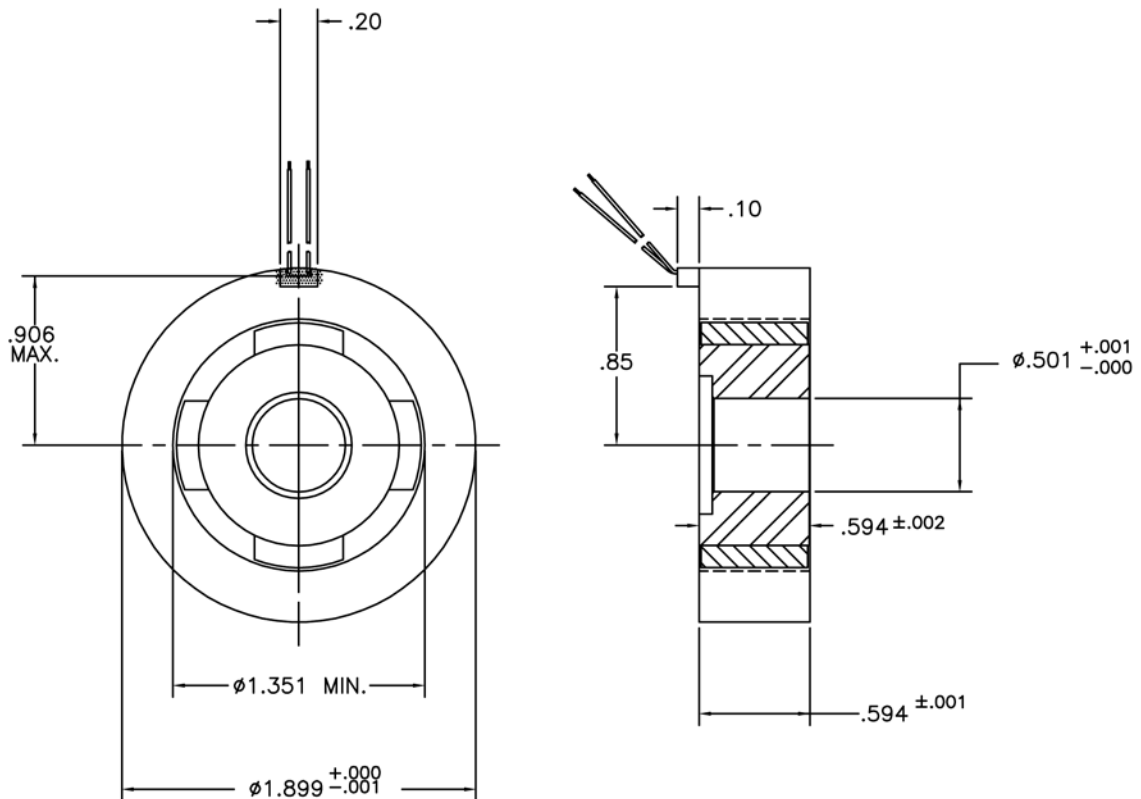
# TD-1900-B-1 Specifications

## TD-1900-B-1 SPECIFICATIONS @ 25°C

Size Constants	Value	Units
Peak Torque, $T_p$	27	oz-in
Motor Constant, $K_M$	3.53	oz-in/ $\sqrt{W}$
Excursion Angle	$\pm 15$	degrees
Number of Poles	4	
Weight	5.5	oz (nom)
Motor Inertia, $J_M$	2.00E-03	oz-in-s <sup>2</sup>
Friction Torque, $T_F$	0.34	oz-in
Electrical Time Constant, $\tau_E$	0.615	ms
Mechanical Time Constant, $\tau_M$	22.93	ms
Winding Constants	Value	Units
Torque Sensitivity, $K_T$	9	oz-in/amp
Back EMF, $K_E$	0.063	V per rad/s
Terminal Resistance, $R_M$	6.5	ohms (nom)
Terminal Inductance, $L_M$	4	mH (nom)
Voltage, Stalled at Peak Torque, $V_p$	22	volts
Amps at Peak Torque, $I_p$	3	amps

Direct Drive  
Brushless Motors

### TD-1900-B-1 Typical Outline Drawing



Dimensions are in inches