

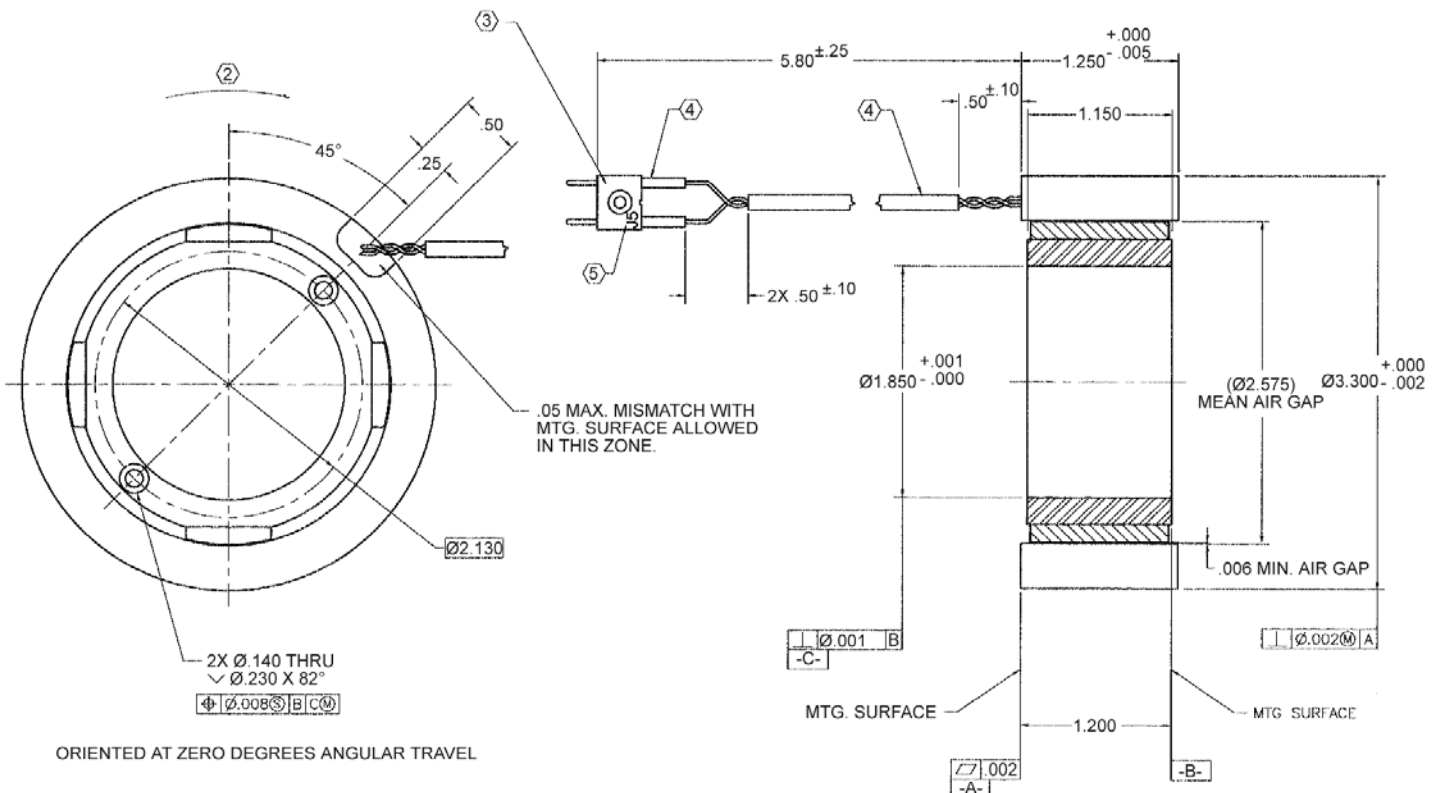
# TD-3300-K-1SC Specifications

## TD-3300-K-1SC SPECIFICATIONS @ 25°C

Size Constants	Value	Units
Peak Torque, $T_P$	65	oz-in
Motor Constant, $K_M$	13.34	oz-in/ $\sqrt{W}$
Excursion Angle	$\pm 22.5$	degrees
Number of Poles	4	
Weight	23.2	oz (nom)
Motor Inertia, $J_M$	3.10E-02	oz-in-s <sup>2</sup>
Friction Torque, $T_F$	1	oz-in
Electrical Time Constant, $\tau_E$	TBD	ms
Mechanical Time Constant, $\tau_M$	24.62	ms
Winding Constants	Value	Units
Torque Sensitivity, $K_T$	26	oz-in/amp
Back EMF, $K_E$	0.184	V per rad/s
Terminal Resistance, $R_M$	3.8	ohms (nom)
Terminal Inductance, $L_M$	TBD	mH (nom)
Voltage, Stalled at Peak Torque, $V_P$	12	volts
Amps at Peak Torque, $I_P$	3.16	amps

Direct Drive  
Brushless Motors

### TD-3300-K-1SC Typical Outline Drawing



Dimensions are in inches