

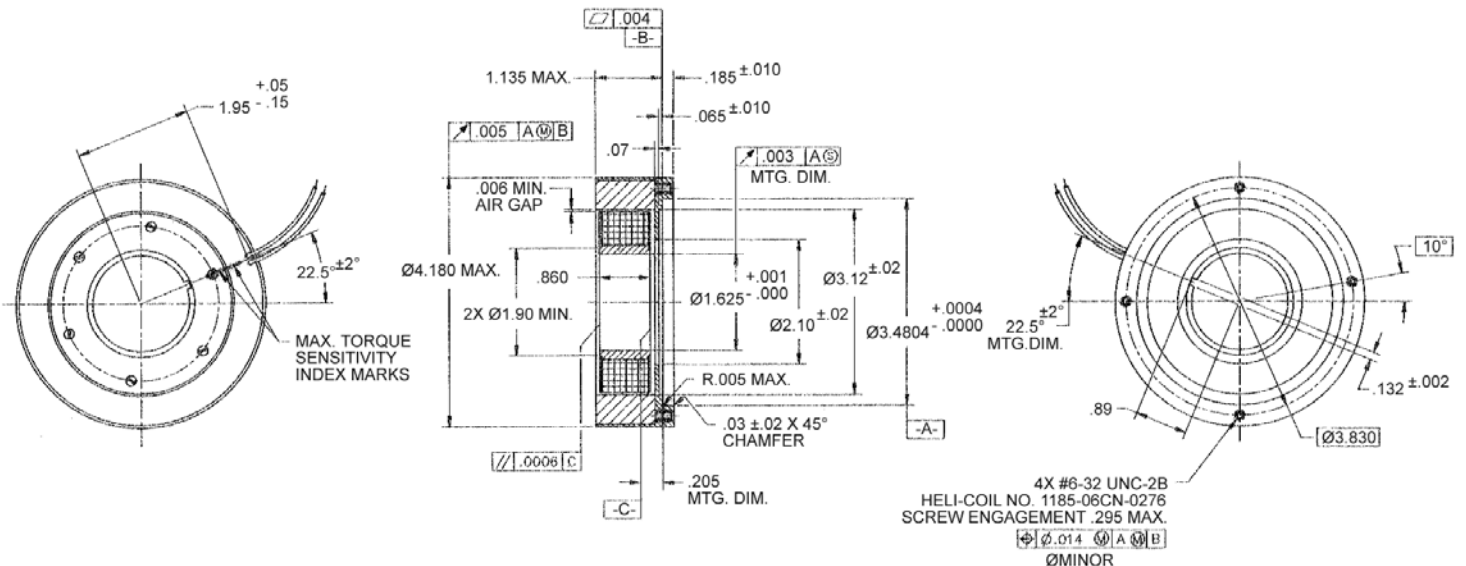
TD-4180-A-1 Specifications

TD-4180-A-1 SPECIFICATIONS @ 25°C

Size Constants	Value	Units
Peak Torque, T_P	336	oz-in
Motor Constant, K_M	26.5	oz-in/ \sqrt{W}
Excursion Angle	± 10	degrees
Number of Poles	6	
Weight	48	oz (nom)
Motor Inertia, J_M	6.8E-02	oz-in-s ²
Friction Torque, T_F	0.1	oz-in
Electrical Time Constant, τ_E	2.000	ms
Mechanical Time Constant, τ_M	13.75	ms
Winding Constants	Value	Units
Torque Sensitivity, K_T	73	oz-in/amp
Back EMF, K_E	.515	V per rad/s
Terminal Resistance, R_M	7.6	ohms (nom)
Terminal Inductance, L_M	14	mH (nom)
Voltage, Stalled at Peak Torque, V_P	14	volts
Amps at Peak Torque, I_P	2	amps

Direct Drive
Brushless Motors

TD-4180-A-1 Typical Outline Drawing



Dimensions are in inches