

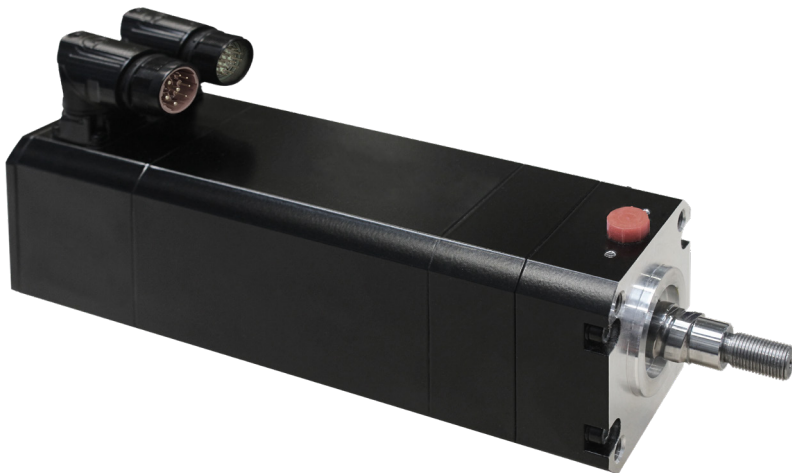
SERVO ACTUATORS MG SERIES

High efficiency electro-mechanical
linear servo actuators



Moog MG Series Electro-mechanical Actuators provide an ideal solution for wide array of the linear actuation requirements in industrial applications. The low maintenance MG Series servo actuators deliver smooth and accurate movement and long operational life even with high payloads providing an electro-mechanical alternative to traditional hydraulic and pneumatic actuation.

The form factor of the MG Series actuators is based on conventional pneumatic and hydraulic cylinders, so customers can easily retrofit existing systems. This, coupled with a wide range of effective stroke lengths, up to 550 mm (21.65 in), means customers can find the right fit for virtually any application. The enhanced flexibility allowed by an electromechanical control makes it easy to perform feats that would be challenging for hydraulic solutions or plainly unachievable with pneumatic ones.



ADVANTAGES

- Compact footprint
- Higher force capability and power density
- Long lasting performance and reliability
- Industry standard interface
- Low noise emission
- Variety of size and motor winding for optional performance

APPLICATIONS

- Industrial automation
- Pick and place robots
- Material handling systems
- Welding applications
- Test and simulation industry
- Retrofit and replacement of hydraulic actuators

SPECIFICATIONS

TECHNICAL DATA

Series	Stall force [N] (lbf)	Maximum force [N] (lbf)	Max speed [mm/s] (in/sec)	Standard stroke [mm] (in)
MG40	1,370 - 3,620 (308 - 814)	5,990 - 14,500 (1,347 - 3,260)	333 (13.11)	Up to 140 (5.51)
MG50	6,290 - 12,400 (1,414 - 2,788)	28,560 - 34,000 (6,421 - 7,644)	213 (8.39)	Up to 220 (8.66)
MG63	8,480 - 26,200 (1,906 - 5,890)	37,700 - 50,000 (8,475 - 11,240)	250 (9.84)	Up to 220 (8.66)
MG90	21,090 - 39,750 (4,741 - 8,936)	59,320 - 83,900 (13,335 - 18,861)	333 (13.11)	Up to 425 (16.73)
MG100	17,910 - 45,710 (4,026 - 10,276)	71,630 - 170,000 (16,102 - 38,216)	254 (10)	Up to 385 (15.16)

KEY DATA

- Operating voltage 560 Vdc – optional other voltages
- Ambient temperature +5 to +40 °C (41 to 104 °F)
- Class F winding insulation
- Resolver or absolute encoder feedback system
- Electrical connection via plug (M23)
- Multiple rod end styles
- Roller screw option available
- Optional liquid or fan cooled variant
- Optional safety brake (24 Vdc)
- ISO flange suitable for standard pneumatic cylinders replacement
- Option stroke length up to 550 mm (21.65 in)

Moog Servo Drives are matched to the MG Series Actuators for optimized system performance.



For more information visit www.moog.com
or email us em-motioncontrol@moog.com

Moog is a registered trademark of Moog Inc. and its subsidiaries. All trademarks as indicated herein are the property of Moog Inc. and its subsidiaries.
©2023 Moog Inc. All rights reserved. All changes are reserved.

Moog Servo Actuators MG Series Leaflet
MCM/Rev -, November 2023, Id CDL67686-en

This technical data is based on current available information and is subject to change at any time. Specifications for specific systems or applications may vary.

MOOG