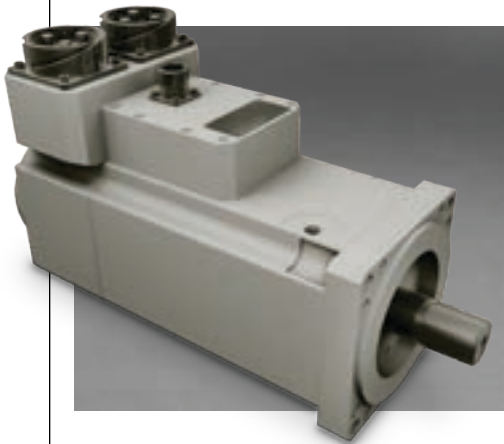


## BRUSHLESS SERVO MOTOR (2-IN-1 MOTOR)



This compact brushless Servo Motor is designed to meet the special requirements of main battle tanks with 2-in-1 stator (double motor) arrangement to accommodate the high power needed. The brushless servo motor is intended to be integrated into a traverse actuator with a gearbox, brake and manual input/ auxiliary drive assembly.

### DESIGN FEATURES

- Brushless DC motor
- 2-in-1 double stator on one output shaft
- Resolver or encoder feedback for commutation, speed and position control
- MIL-STD electrical connectors (two for power and one for feedback signals)
- MIL-STD 810E and MIL-STD 461E compliant

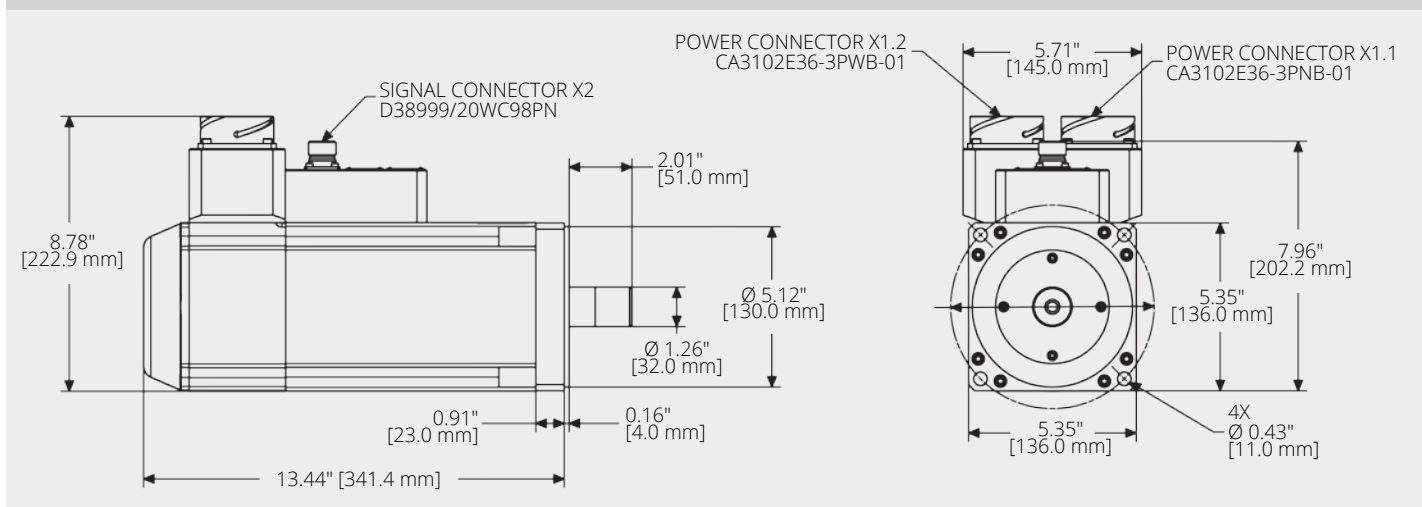


# BRUSHLESS SERVO MOTOR (2-IN-1 MOTOR)

## PERFORMANCE SPECIFICATIONS

Main Motor	Motor 1 of 2	Motor 2 of 2
Torque constant	0.078 Nm/Arms	0.078 Nm/Arms
Maximum motor current	565 Arms 800 Apk	565 Arms 800 Apk
Maximum motor torque	38.2 Nm	38.2 Nm
	76.4 Nm	
Maximum motor power	8300W	8300W
	16600W	
Nominal motor current	173 Arms	173 Arms
Nominal motor torque	13.6 Nm	13.6 Nm
Nominal motor power	4100W	4100W
	8200W	
Nominal motor speed	2900 rpm	2900 rpm
No-load speed @ 24VDC	3150 rpm	3150 rpm
Motor feedback sensor	Resolver or Encoder	

## ARCHITECTURAL AND DIMENSIONAL DRAWING



# MOOG

**AMERICAS**  
dcs@moog.com  
www.moog.com/defense

**AUSTRALIA**  
Info.australia@moog.com  
www.moog.com.au

**EUROPE**  
defenceurope@moog.com  
www.moog.com/defence



Products and solutions are subject to the export control requirements of the country in which they are manufactured.

©2024 Moog, Inc. All rights reserved.  
Product and company names listed are trademarks or trade names of their respective companies.

Form 500-997 0424