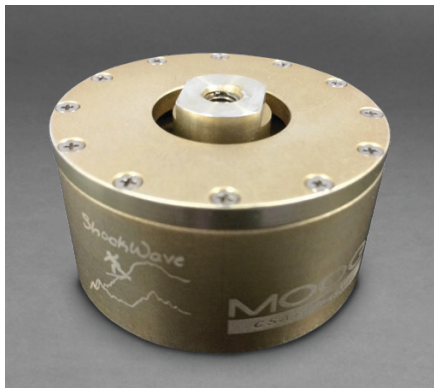


## SHOCKWAVE ISOLATOR



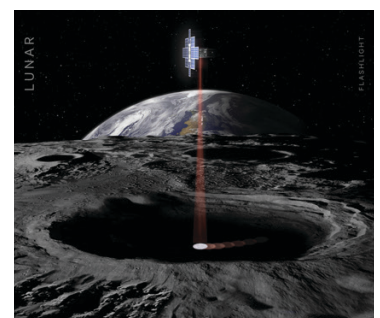
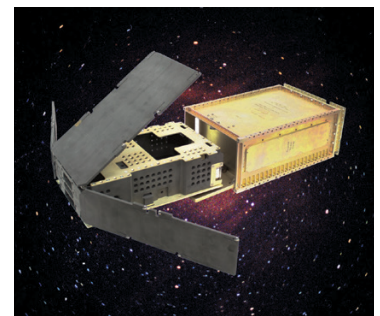
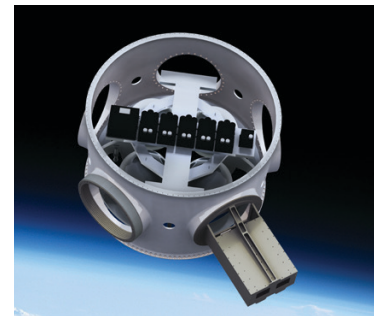
Moog's ShockWave isolator product family is the perfect solution for small payload and CubeSat launch isolation. ShockWave leverages more than two decades of spaceflight hardware heritage and packages launch worthy technology into a reliable, predictable system at a price point that is comparable to non-aerospace-worthy, elastomeric isolation mounts.

### KEY FEATURES

- Low mass, low profile and highly damped isolation mounts
- Suitable for shock and random vibration load attenuation
- Configurable with metric and standard interfaces
- Predictable attenuation with a failsafe metallic load path
- Robust performance over the launch operational environment

### PROVIDES VIBRATION ISOLATION FOR:

- CubeSat Dispensers
- Optical Mounts
- Machine Tools
- Electronics Components
- Directed Energy Systems



# SHOCKWAVE ISOLATOR

The standard Shockwave isolator is available in two stiffnesses. The -75H1 model is lower stiffness and the -7575 model provides higher stiffness along with capability for larger loads. The nominal stiffness and loss values for these ShockWave part numbers are shown below across a broad frequency range.

-75H1 NOMINAL STIFFNESS (SW-150-1000-190-75H1)				
Description	20 Hz	50 Hz	100 Hz	
Axial (lbf/in)	2,300	2,700	3,200	
Lateral (lbf/in)	4,400	5,800	7,900	
Loss (% Structural)	>40	>40	>40	

-7575 NOMINAL STIFFNESS (SW-150-1000-190-7575)				
Description	20 Hz	50 Hz	100 Hz	
Axial (lbf/in)	10,000	12,500	15,000	
Lateral (lbf/in)	6,000	7,500	9,500	
Loss (% Structural)	>30	>40	>40	

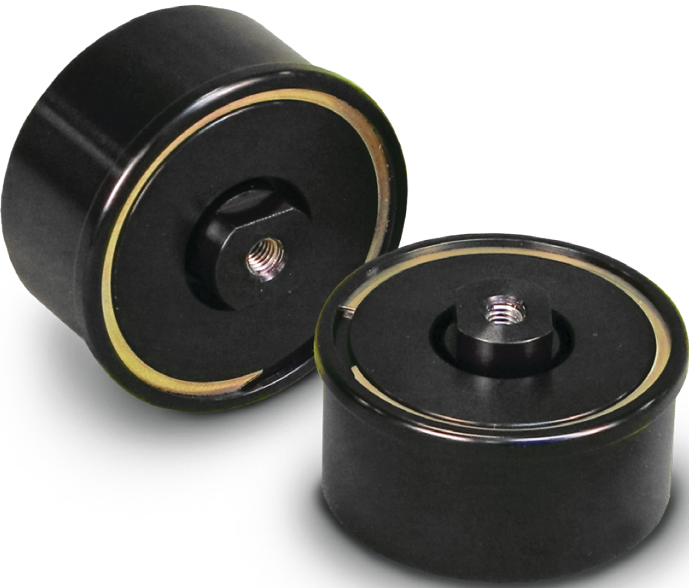
The ShockWave isolator is modular and configurable. It will accommodate a wide variety of spacecraft configurations.

**MECHANICAL DIMENSIONS (IN INCHES)**  
VIEW ICD FOR FURTHER DETAIL - METRIC INTERFACE UPON REQUEST

**Top View Dimensions:**  
R.300 (fillet radius)  
10-32 Helicoil Insert (center)  
Wrench Flats (width: .490)  
Ø1.940 (outer diameter)  
Ø1.840 (inner diameter for mounting threads)

**Side View Dimensions:**  
1.074 (total height)  
.934 (height to top of mounting threads)  
10-32 Mounting Threads from Captive Fastener

**Assembly Specifications:**  
Assembly Mass: 80 Grams  
Mounting Torque: 38 in-lb  
Survival Temp.: -60°C to 80°C  
Max. Stroke: Axial: 0.10  
Radial: 0.08 in



## EXAMPLE INSTALLATION GUIDE

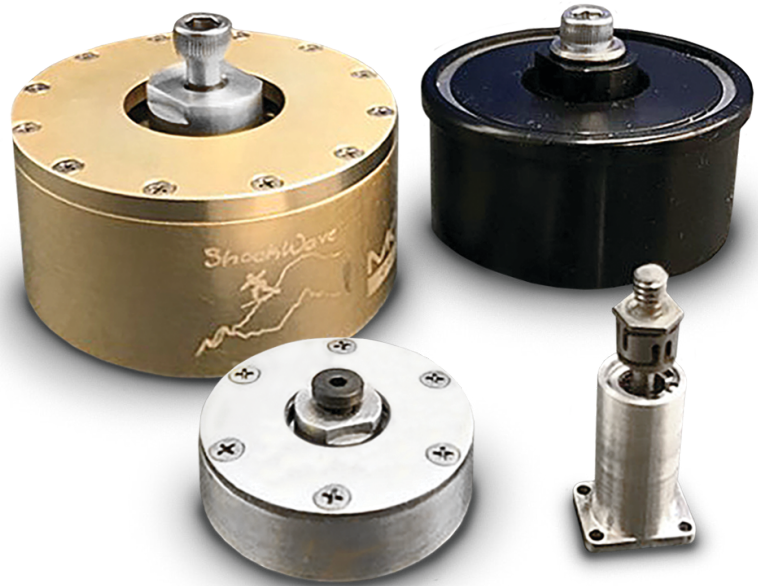
**Base Preparation:** 8X Ø .159 THRU ALL 10-32 UNF THRU ALL (hole pattern for instructional purposes only)

**Install Shockwave:** 1/8 Allen wrench torque captive fastener through payload thread

**Install Payload:** Install payload fasteners

**Views:** Top View, Side View

Shockwave is available in COTS parts as well as customizable options.



# MOOG

[space@moog.com](mailto:space@moog.com)  
[www.moog.com/space](http://www.moog.com/space)



Moog Space and Defense



Moog Inc.



@Moog\_Inc



@Moog.Inc

Equipment described herein falls under the jurisdiction of the EAR and may require US Government Authorization for export purposes. Diversion contrary to US law is prohibited.  
©2024 Moog, Inc. All rights reserved.

Product and company names listed are trademarks or trade names of their respective companies.

Form 500-1094 091124