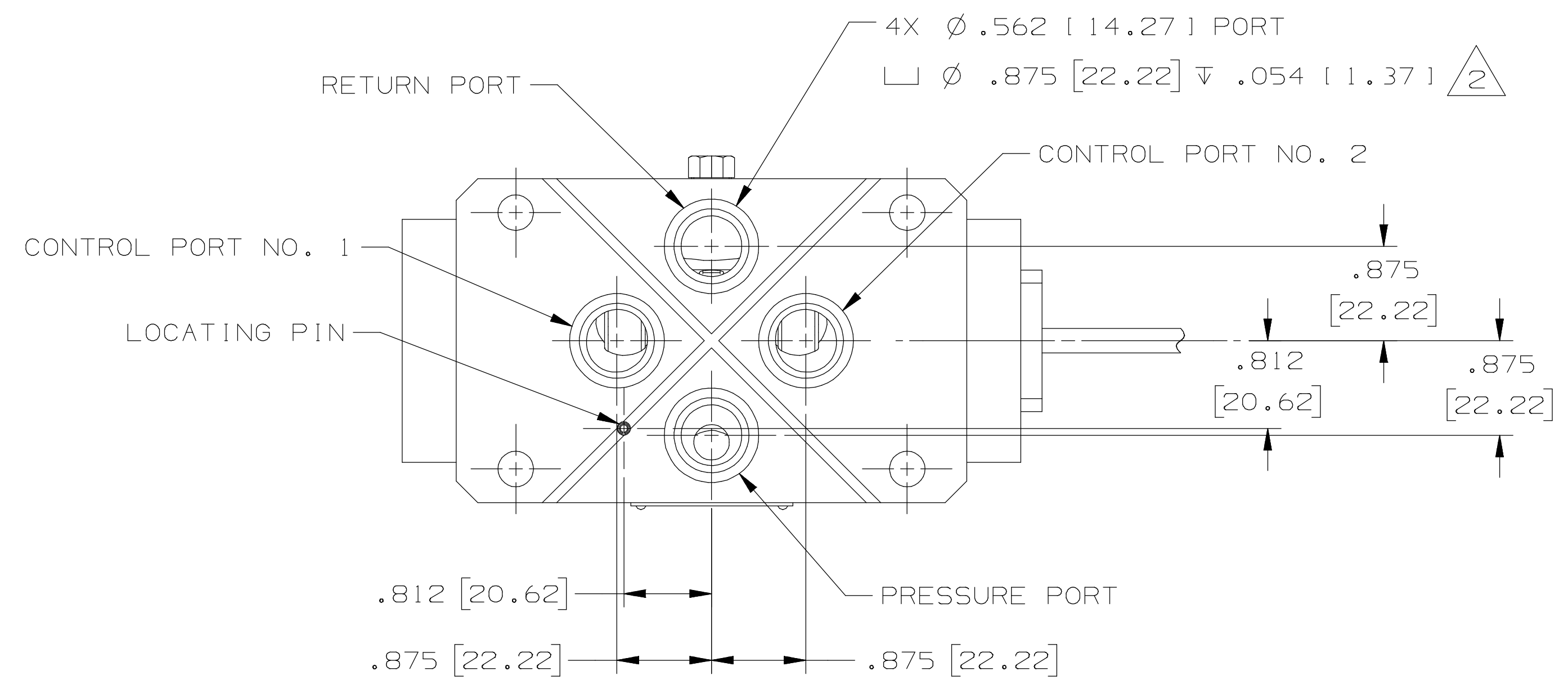
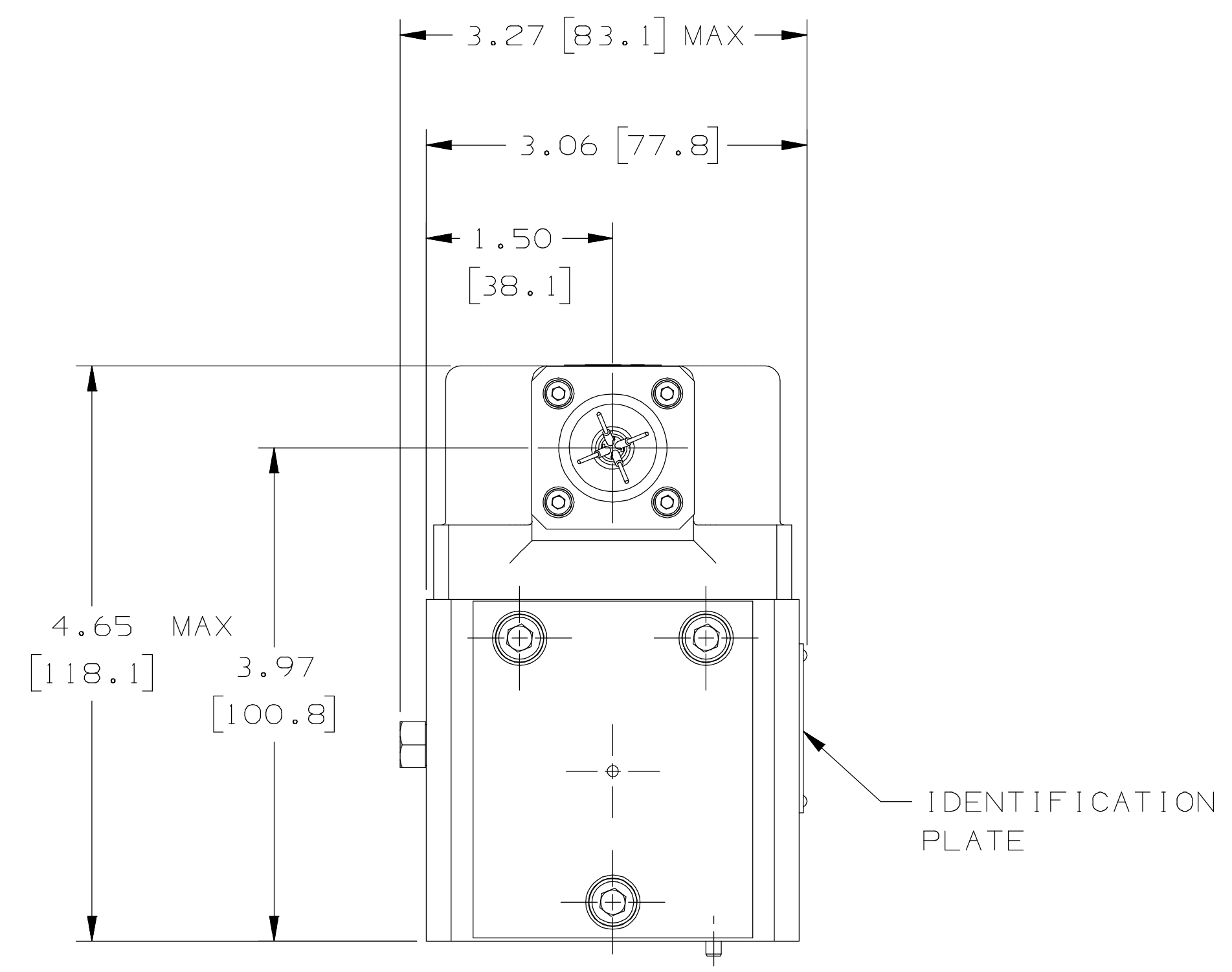
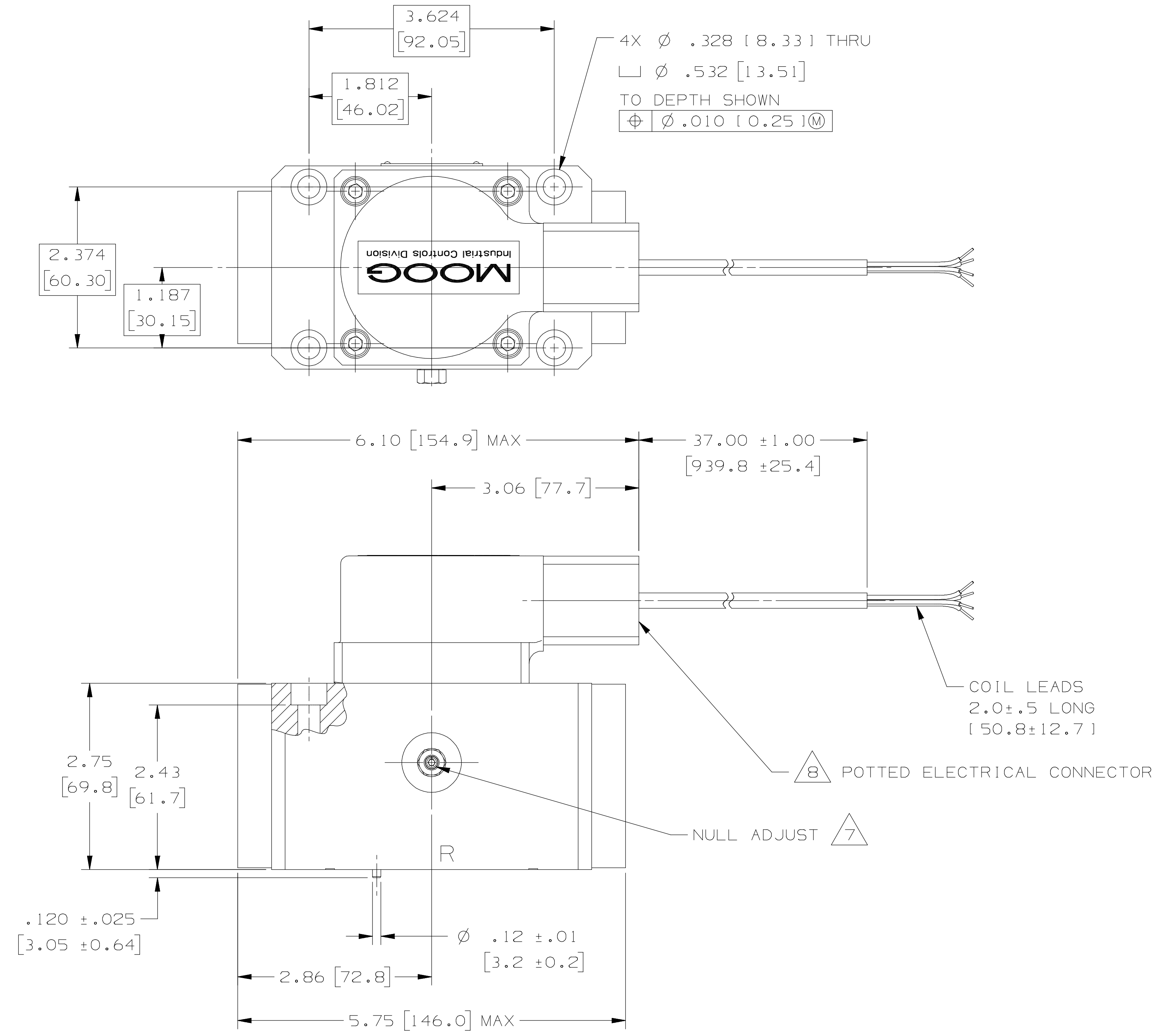
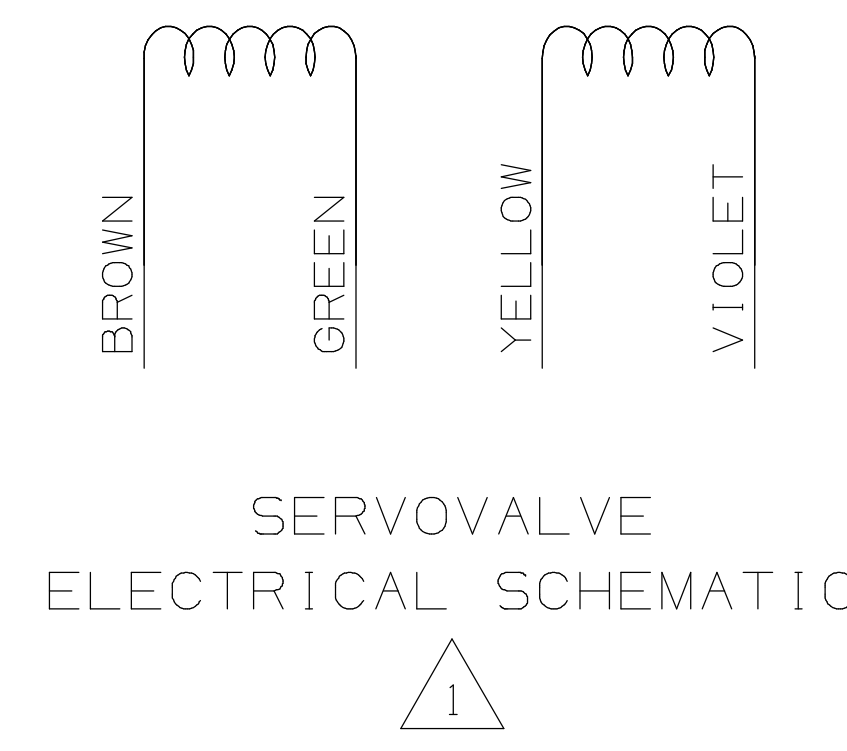


THIS TECHNICAL DATA/DRAWING/DOCUMENT CONTAINS MOOG PROPRIETARY AND CONFIDENTIAL INFORMATION. SUBSIDIARIES EXCEPT AS EXPRESSLY GRANTED BY CONTRACT OR BY OPERATION OF LAW AND IS RESTRICTED TO USE BY ONLY MOOG EMPLOYEES AND OTHER PERSONS AUTHORIZED IN WRITING BY MOOG OR AS EXPRESSLY GRANTED BY CONTRACT OR BY OPERATION OF LAW. NO PORTION OF THIS DATA/DRAWING/DOCUMENT BE REPRODUCED OR DISCLOSED OR COPIED OR FURNISHED IN WHOLE OR IN PART TO OTHERS OR USED BY OTHERS FOR ANY PURPOSE WHATSOEVER EXCEPT AS SPECIFICALLY AUTHORIZED IN WRITING BY MOOG INC. OR MOOG INC. SUBSIDIARY.

REVISONS		DATE	APPROVED
-	ECN102210: RELEASED	7-14-92	KIL/TJF
A	ECN101412: CHANGE CONFIG. OF NPL	5-7-93	RDR/RCM
B	CRN 110054: NOTE 5 WAS: . . . RANGE: -40° F TO +275° F [-40° C TO +135° C]	8/28/00	PZ/XZ
C	SEE EO UE1023815	20081006	KJY/MEL

- NOTES:
- 1 SERVOVALVE PHASING: FLOW OUT PORT 2 WILL RESULT WHEN:
SINGLE COIL: BROWN +, GREEN -, OR YELLOW +, VIOLET -
SERIES COILS: GREEN AND YELLOW ARE TIED, BROWN +, VIOLET -
PARALLEL COILS: BROWN AND YELLOW TIED +, GREEN AND VIOLET TIED -
 - 2 4 PORT ORINGS: .070 [1.78] SECTION X .739 [18.77] I.D. (UNIVERSAL SIZE -018)
 - 3 SURFACE TO WHICH VALVE MOUNTS REQUIRES $\sqrt{32}$ FINISH, FLAT WITHIN .002 [0.05]
 - 4 FLUID: PETROLEUM BASE HYDRAULIC FLUID, 60 TO 450 SUS @ 100°F [110 TO 97 CENTISTOKES @ 38°C] BUNA N OR VITON SEALS.
FLUID CLEANLINESS LEVEL PER ISO 4406 (SAE J 1165) CODE 16/13 MAXIMUM.
MAXIMUM WORKING PRESSURE 3000 PSI [206.8 BAR].
 - 5 OPERATING TEMPERATURE RANGE:
AMBIENT: -40°F TO +176°F [-40°C TO +80°C].
PROCESS: -40°F TO +266°F [-40°C TO +130°C].
 - 6 DIMENSIONS WITHOUT TOLERANCE ARE FOR REFERENCE ONLY.
DIMENSIONS IN BRACKETS () ARE IN MILLIMETERS.
 - 7 FLOW OUT C2 WILL INCREASE WITH CLOCKWISE ROTATION OF NULL ADJUST SCREW (3/32 HEX KEY)
 - 8 ELECTRICAL CONNECTOR MACHINED WITH 1/2-14 NPT FEMALE THREAD FOR CONDUIT CONNECTION.



INTERNATIONAL PART

G0281		INSTALLATION, -078 SERIES		PART OR IDENTIFYING NO.		NOMENCLATURE OR DESCRIPTION		BALLON NO.	
PARTS LIST									
MOOG INC.									
MOOG INC., EAST AURORA, NY 14052									
TITLE INSTALLATION, -078 SERIES, EXPLOSION PROOF									
CAGE CODE E94697									
DWG NO. G0281									
SCALE 1/1									
SHEET 1 OF 1									