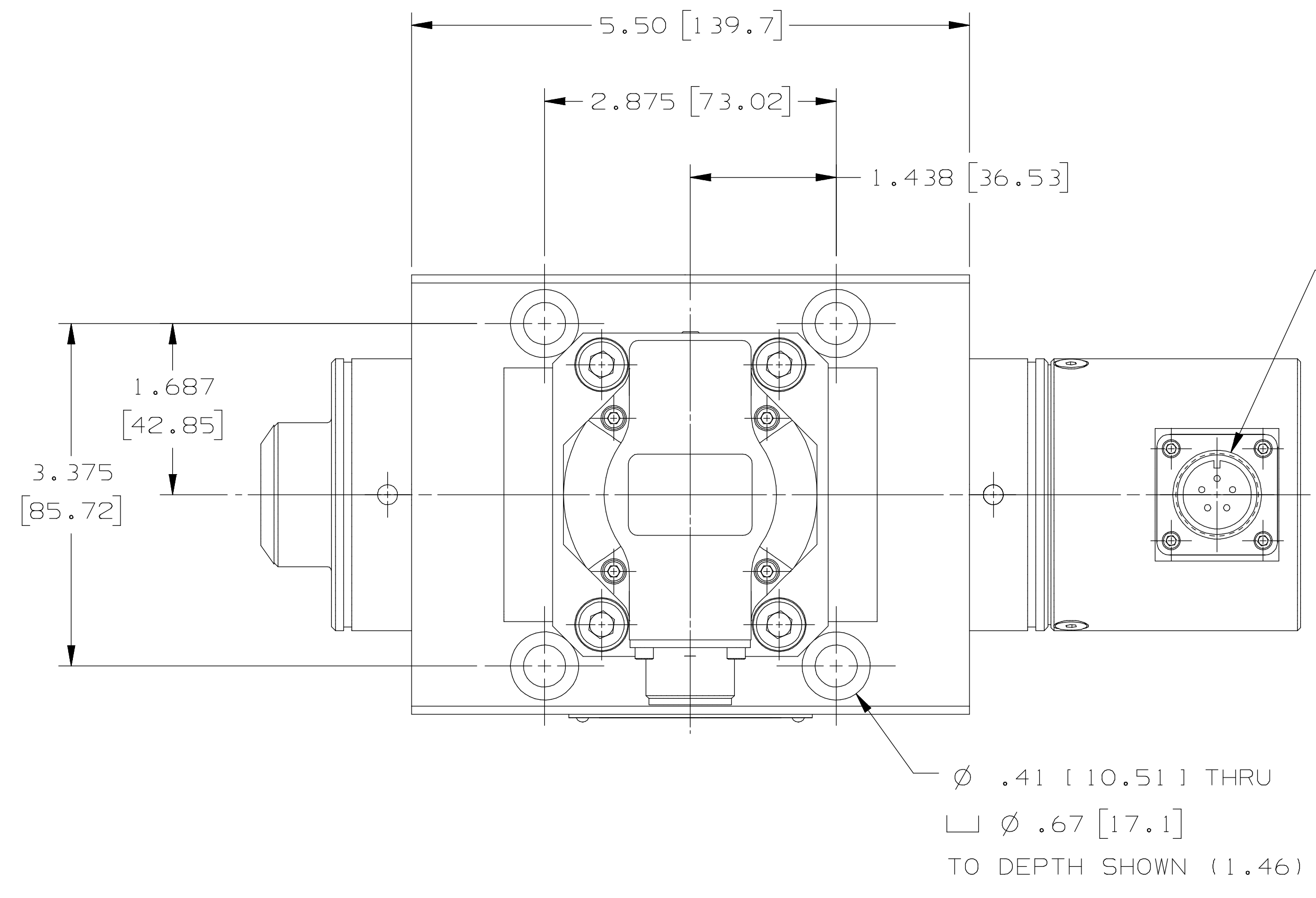


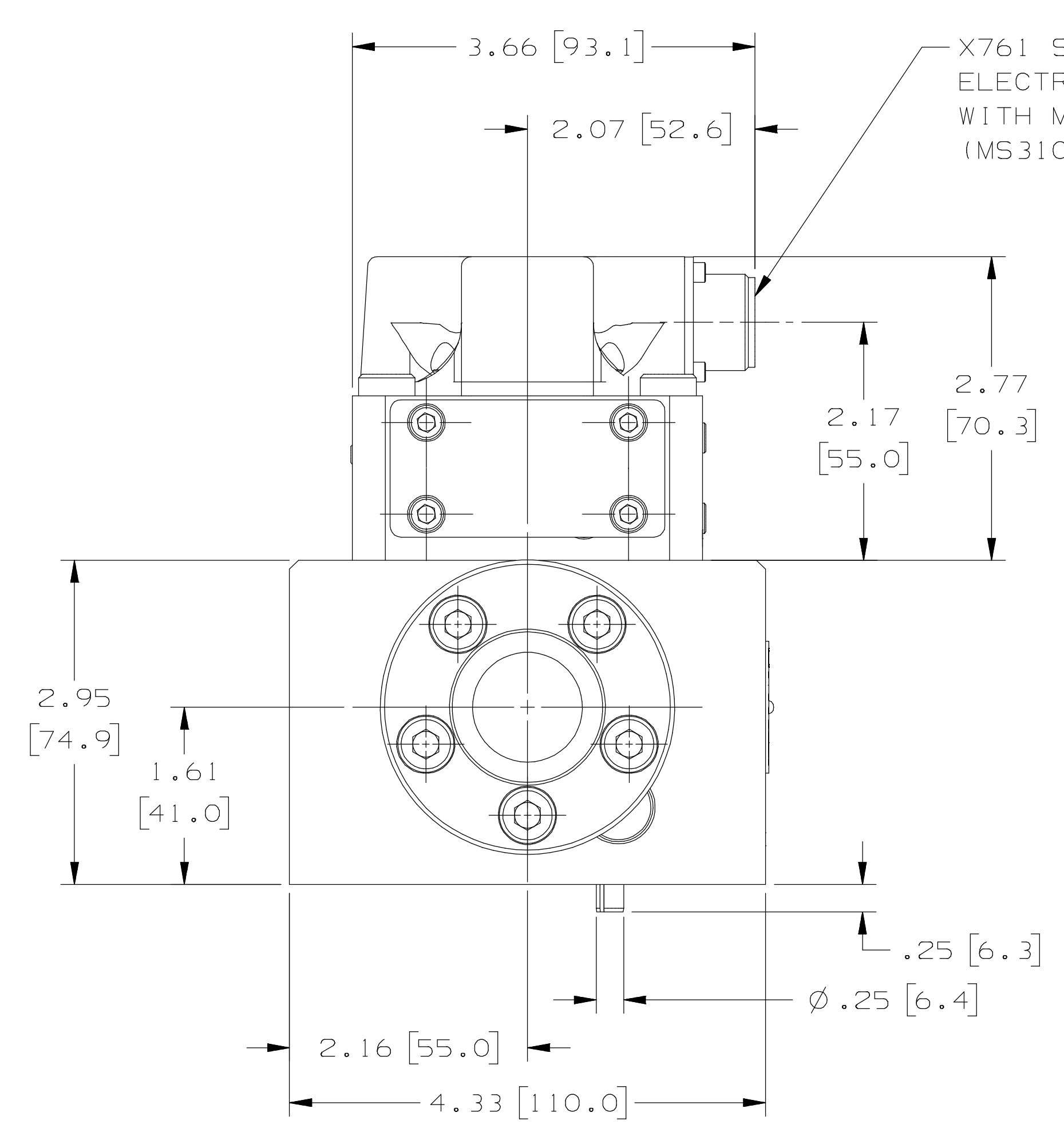
ZONE REV		DESCRIPTION	DATE	APPROVED
-	EO UE1025827	RELEASE.	20090112	KJY/MEL/LAW

THIS TECHNICAL DATA/DRAWING/DOCUMENT CONTAINS PROPRIETARY AND CONFIDENTIAL INFORMATION OF MOOG INC. OR MOOG INC. SUBSIDIARIES EXCEPT AS EXPRESSLY GRANTED BY CONTRACT OR BY OPERATION OF LAW AND IS RESTRICTED TO USE BY ONLY MOOG EMPLOYEES AND OTHER PERSONS AUTHORIZED IN WRITING BY MOOG OR AS EXPRESSLY GRANTED BY CONTRACT OR BY OPERATION OF LAW. NO PORTION OF THIS DATA/DRAWING/DOCUMENT SHALL BE REPRODUCED OR DISCLOSED OR COPIED OR FURNISHED IN WHOLE OR IN PART TO OTHERS OR USED BY OTHERS FOR ANY PURPOSE WHATSOEVER EXCEPT AS SPECIFICALLY AUTHORIZED IN WRITING BY MOOG INC. OR MOOG INC. SUBSIDIARY.

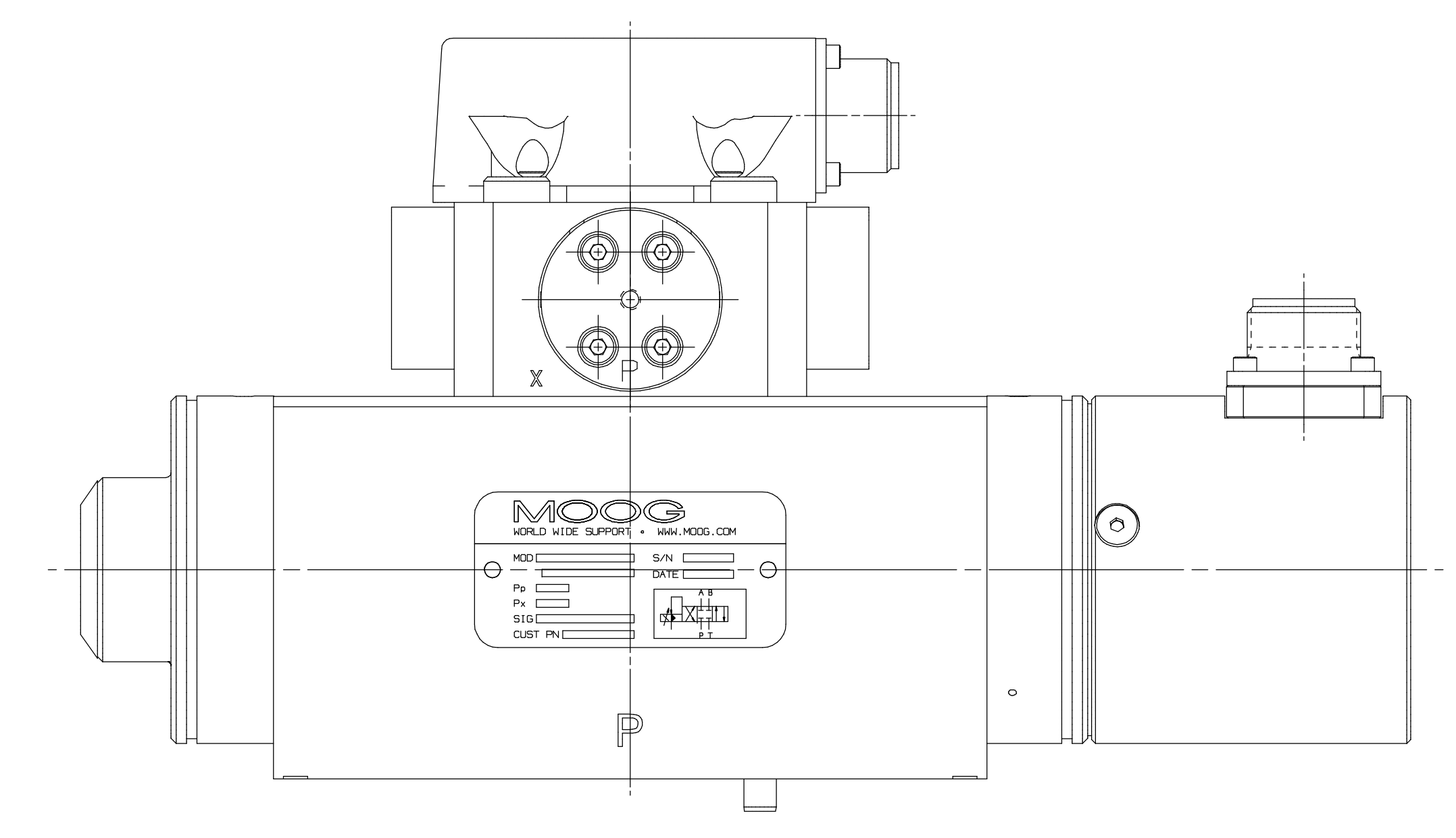
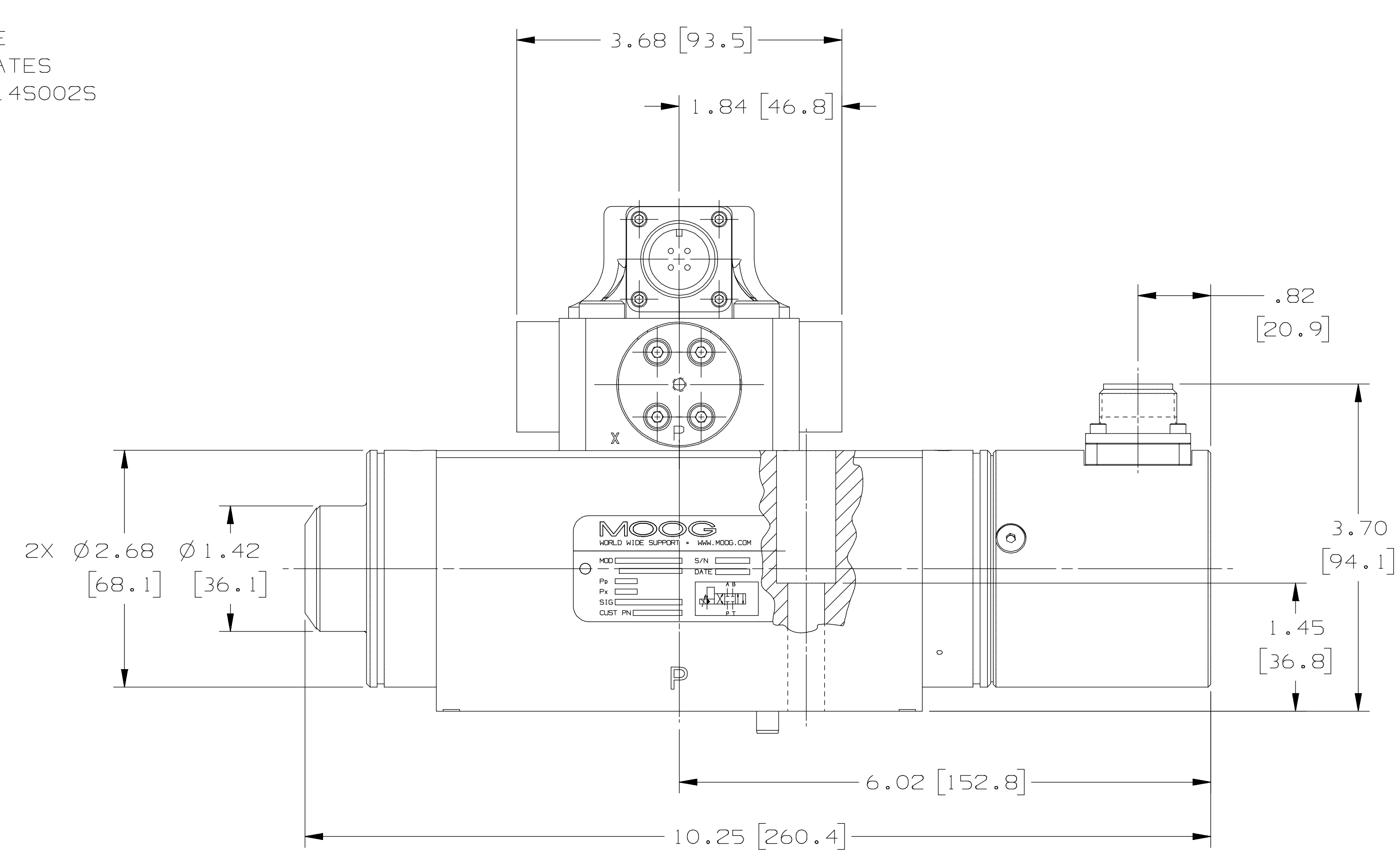
- NOTES:
- FLUID: PETROLEUM BASE HYDRAULIC FLUID, 60 TO 450 SUS @ 180°F (10 TO 97 CSTK @ 38°C).
RECOMMENDED FLUID CLEANLINESS LEVEL:
FOR NORMAL OPERATION: ISO 4406 < 14/11.
FOR LONGER LIFE: ISO 4406 < 13/10.
 - OPERATING TEMPERATURE: 14°F (-10°C) TO 176°F (+80°C).
 - BASE O-RINGS:
MAIN PORTS: .801 [20.35] I.D. X .070 [1.78] CS
MOOG P/N -42082-040, UNIVERSAL SIZE -019.
PILOT PORTS: .301 [7.65] I.D. X .070 [1.78] CS
MOOG P/N -42082-012, UNIVERSAL SIZE -011.
 - DIMENSIONS WITHOUT TOLERANCES ARE FOR REFERENCE ONLY.
DIMENSIONS WITH BRACKETS ARE IN MILLIMETERS.
 - REFERENCE FLOW RATING: 60 GPM AT 1000 PSID, ±.060 INCHES SPOOL TRAVEL.
 - MAXIMUM SYSTEM PRESSURE: 4500 PSI WITH ALUMINUM PILOT BODY,
5000 PSI WITH STEEL PILOT BODY.
 - SURFACE TO WHICH VALVE IS MOUNTED REQUIRES $\sqrt{10.81 \text{ } 32}$ FINISH, FLAT WITHIN .001 [0.025].
 - SUGGESTED MOUNTING SCREWS: .375-16UNC X 2.25 LG [M10-1.75 X 45mm]
SOCKET HEAD CAP SCREWS.
- (NOTES CONTINUED BELOW)



TRANSUCER ELECTRICAL CONNECTOR
MATES WITH MOOG P/N -49054F014S005S
(MS3106-14S-5S)



X761 SERIES SERVOVALVE
ELECTRICAL CONNECTOR MATES
WITH MOOG P/N -49054F014S002S
(MS3106-14S-2S)

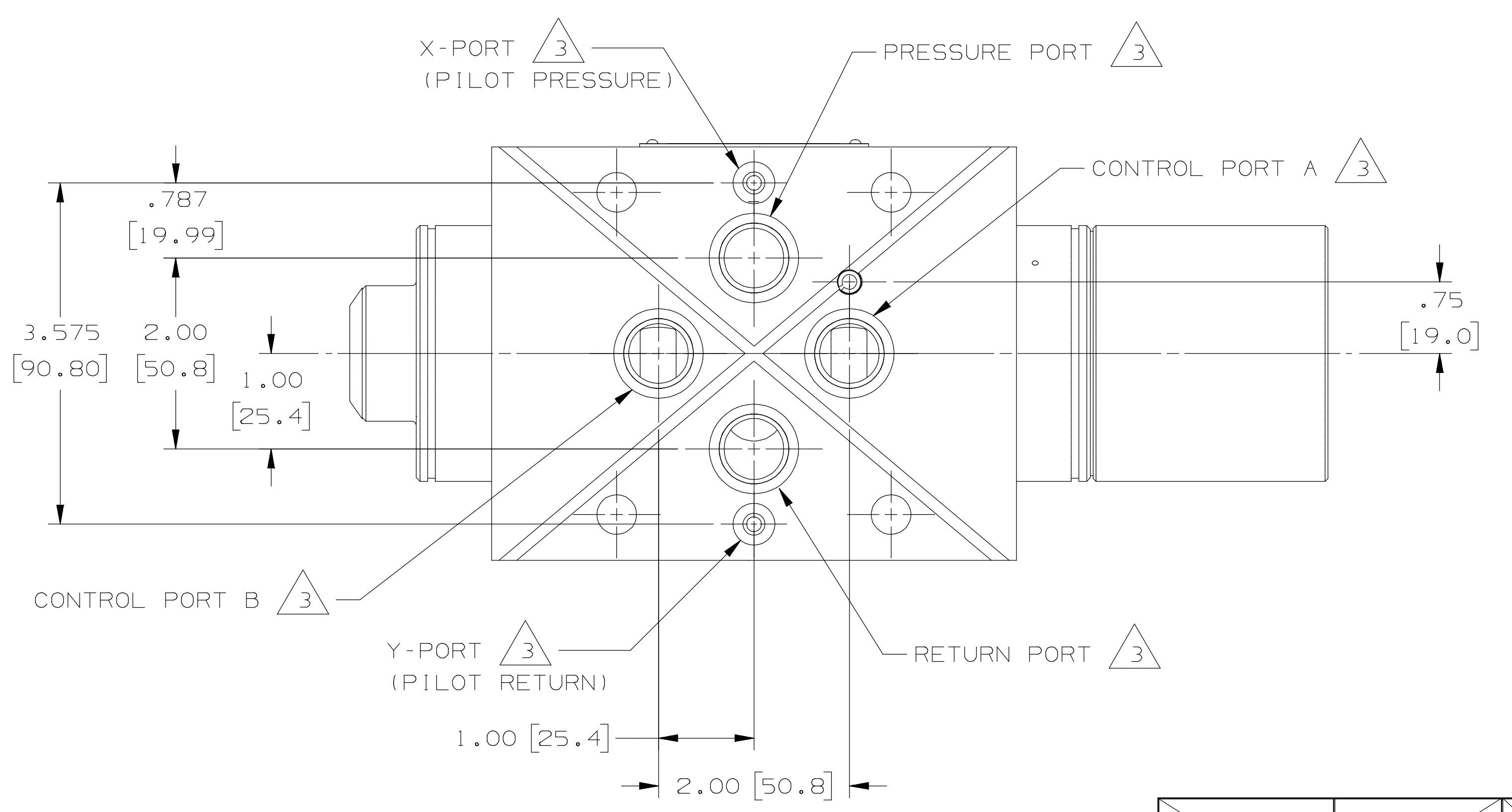
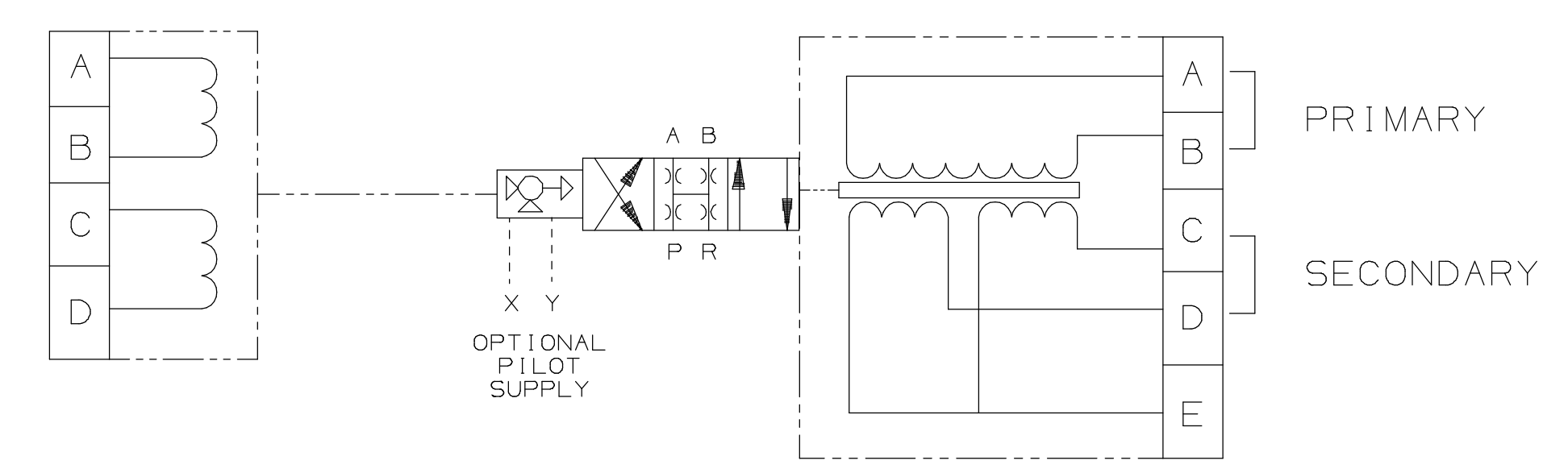


OPTIONAL PILOT CONNECTOR ORIENTATION
OVER CONTROL PORT A

- NOTES: (CON'T)
- PILOT VALVE:
A. PHASING: FLOW OUT OF "B" WILL RESULT WHEN:
SERIES COILS: "B" & "C" INTERCONNECTED: "A" PLUS, "D" MINUS.
PARALLEL COILS: "A" & "C" PLUS, "B" & "D" MINUS.
B. COIL RESISTANCE: 80Ω PER COIL.
C. RATED CURRENT: SEE PILOT NAMEPLATE.
D. FLOW OUT OF PILOT PORT "B" RESULTS IN FLOW OUT MAIN STAGE PORT "A".
 - TRANSUCER (LVDT):
A. PHASING: FLOW OUT OF "A": "A" & "C" COMMON, "B" & "D" ARE OUT OF PHASE.
B. EXCITATION: 15 VAC RMS MAX AT 2 - 4 KHZ RECOMMENDED.
C. SENSITIVITY: 1.1 VOLTS/VOLT INCH AT 2 KHZ; ≥ 50 KΩ LOAD.

9 PILOT VALVE

10 LVDT TRANSUCER



INTERNATIONAL PART

CONTRACT NO.	MOOG INC.
PREPARED	K.J.YACOS 20081231
CHECKED	M.E.LUDLOW 20081231
DES ENGR	M.E.LUDLOW 20081231
PRD ENGR	
APL ENGR	
MFG	
QUAL	
TITLE	MOOG INC., EAST AURORA, NY 14052 INSTALLATION, 3 STAGE SERVOVALVE, -079-1XX SERIES, 6-PORT
SIZE	E94697
CAGE CODE	
DWG NO.	CA84713
SCALE	1/1
WT	
SHEET	1 OF 1

PART NO. CA84713